

**Environment and Natural Resources Trust Fund
2018 Request for Proposals (RFP)**

Project Title:

ENRTF ID: 212-G

Swedish Immigrant Trail Segment within Interstate State Park

Category: G. Land Acquisition, Habitat and Recreation

Total Project Budget: \$ 2,254,665

Proposed Project Time Period for the Funding Requested: 3 years, July 2018 to June 2021

Summary:

Swedish Immigrant Regional Trail connection through Interstate Park to Taylors Falls City Hall. Build 180 bridge and trail segment A&B as illustrated. Segment C reviews and engineering only.

Name: Laird Mork

Sponsoring Organization: Chisago County Environmental Services

Address: P.O. Box 815
North Branch MN 55056

Telephone Number: (651) 674-2345

Email Laird.Mork@chisagocounty.us

Web Address www.chisagocounty.us

Location

Region: Central

County Name: Chisago

City / Township: Taylors Fall

Alternate Text for Visual:

2 maps, one of entire trail Taylors Falls to Wyoming and one of Interstate State Park Segments

_____ Funding Priorities	_____ Multiple Benefits	_____ Outcomes	_____ Knowledge Base
_____ Extent of Impact	_____ Innovation	_____ Scientific/Tech Basis	_____ Urgency
_____ Capacity Readiness	_____ Leverage	_____ TOTAL	_____ %

PROJECT TITLE: Swedish Immigrant Trail Segment within Interstate State Park

I. PROJECT STATEMENT

The Swedish Immigrant Regional Trail is a multi-use non-motorized trail connecting the Sunrise Prairie Trail in Wyoming to the St. Croix River National Wild & Scenic River in Taylors Falls through Interstate State Park. This area serves nearly 500,000 visitors each year. Because the last segments of the trail are within the State Park, Chisago County will process a Joint Powers Agreement to guide the relationship within the state park.

Chisago County will take the lead on securing funds for the engineering, design and development of the trail from its terminus at the State Park boundary through the park; the DNR will provide the land. This project showcases the critical collaboration necessary to link state parks to regional trails and providing opportunities for access and recreation across the entire region.

This project meets the LCCMR Six-Year strategic plan criteria for trails to “expand outdoor recreational opportunities through additions and connections to state, regional or local parks and trails. *The goal of this project is to continue the development of the trail through the State Park, a new trailhead to provide access to planned city trails, allow for further feasibility studies through a challenging portion of the park and to connect current and planned trail acquisition and construction meeting a significant goal for the project. It also serves as a vital link to future state trail systems when they are developed, including the Gateway and Willard Munger Trails.*

This project will meet the evaluation criteria and the goals of the ENRTF by providing natural and cultural resource evaluation, engineering and development of a hard surface, accessible multi-use non-motorized trail showcasing the unique hardwood forest area of the state park and the St. Croix National Wild & Scenic River. The trail will connect the existing hiking trail at the west edge of the State park, with the path to the scenic overlook of the St. Croix Valley and to the Taylors Falls City Hall (where parking and accessible facilities are available). This project will make a connection to Taylors Falls City Hall and provide funding to continue cultural and Natural resource review in the State Park, for section C to the east. Funds included for dumps site cleanup within the State Park.

Finally, because of its connection to the Sunrise Prairie Trail, the successful completion of this trail will result in a truly significant regional trail.

II. PROJECT ACTIVITIES AND OUTCOMES

Activity 1: Cultural and natural resource evaluation of trail route Segment A & B.	Budget: \$11,700
Outcome: Complete cultural resources and natural resource review Segment A & B.	<u>Completion Date</u> 2018
Activity 2: Build Trail, Bridge and Parking / Trail Head	
Outcome: Complete 180’ bridge, Trail Segment A .5 mile within State Park & Segment B with spur to Taylors Falls City Hall, Pave Parking Area/Trail Head	Budget:\$2,040,615
	<u>Completion Date</u> 2018
Activity 3: Study/evaluation of trail route Segment C to determine feasibility through the park.	Budget:\$202,350
Outcome: Detailed topographical, cultural and natural resources review documents.	<u>Completion Date</u> 2019
Estimated Total:	\$2,254,665

III. PROJECT STRATEGY

A. Project Team/Partners

Project team includes Chisago County, State MN DNR Parks and Trails and the cities of Taylors Falls. Partners on the balance of the trail include the City of Shafer, Center City, Lindstrom and Chisago City. Chisago County completed a Master Plan for the Swedish Immigrant Regional Trail and received regional designation in 2014. The Master Plan identified eight segments for the 20 mile trail. Chisago County has been building segments of the trail as property and funding become available.

Master Plan Document at <http://www.chisagocounty.us/DocumentCenter/View/6641>

Chisago County through a Joint Powers Agreement with the MN DNR will receive the grant from the ENRT. The Joint Powers Agreement (attached) defines the working relationship between the county and the DNR.

In summary, the MNDNR will assist with Natural Resource Review and Cultural Resource Review. The MNDNR will contribute the use of land resources for the project area. The DNR Staff will assist with project completion through ongoing review and consultation.

The City of Taylors Falls will contribute land resources for the trailhead/parking area.

The State has awarded Chisago County regional Legacy funds in recent years to complete other segments of this trail. In addition to Legacy funds, Chisago County has committed funding in 2018 to complete a connection project segment F.

The County expects future commitments from each of the participating entities, and entities will continue to connect the segments between and through each of the Cities.

B. Project Impact and Long-Term Strategy

The Swedish Immigrant Regional Trail, will connect the communities of the Chisago Lakes area, will be a safe, non-motorized transportation alternative, provide recreational and economic development opportunities for the region. When completed, the Swedish Immigrant Regional Trail will connect Taylors Falls to Shafer, Center City, Lindstrom, Chisago City and Wyoming. This trail connection across Chisago County to the Sunrise Prairie Trail provides a link to the Hardwoods Creek Trail in Washington County and to points beyond. When completed will have a significant regional impact.

The project will also provide for critical linkages to the Gateway Trail and Willard Munger Trail as those trails are developed in the future.

C. Timeline Requirements

Trail segment A & B will be completed in 24 to 36 months (July 2018 – June 2020) Study/review of Segment C will occur simultaneously.

2018 Detailed Project Budget

Project Title: Swedish Immigrant Regional Trail within Interstate State Park, Segment A & B

Note, the Swedish Immigrant Regional Trail is a 20 mile east - west trail. Segments completed to date include A, C, E and G. Both State and local funding has been secured for segment F which will be under construction in 2018. These segments have been completed with a combination of State and Local funding. Please see attached mapping for orientation.

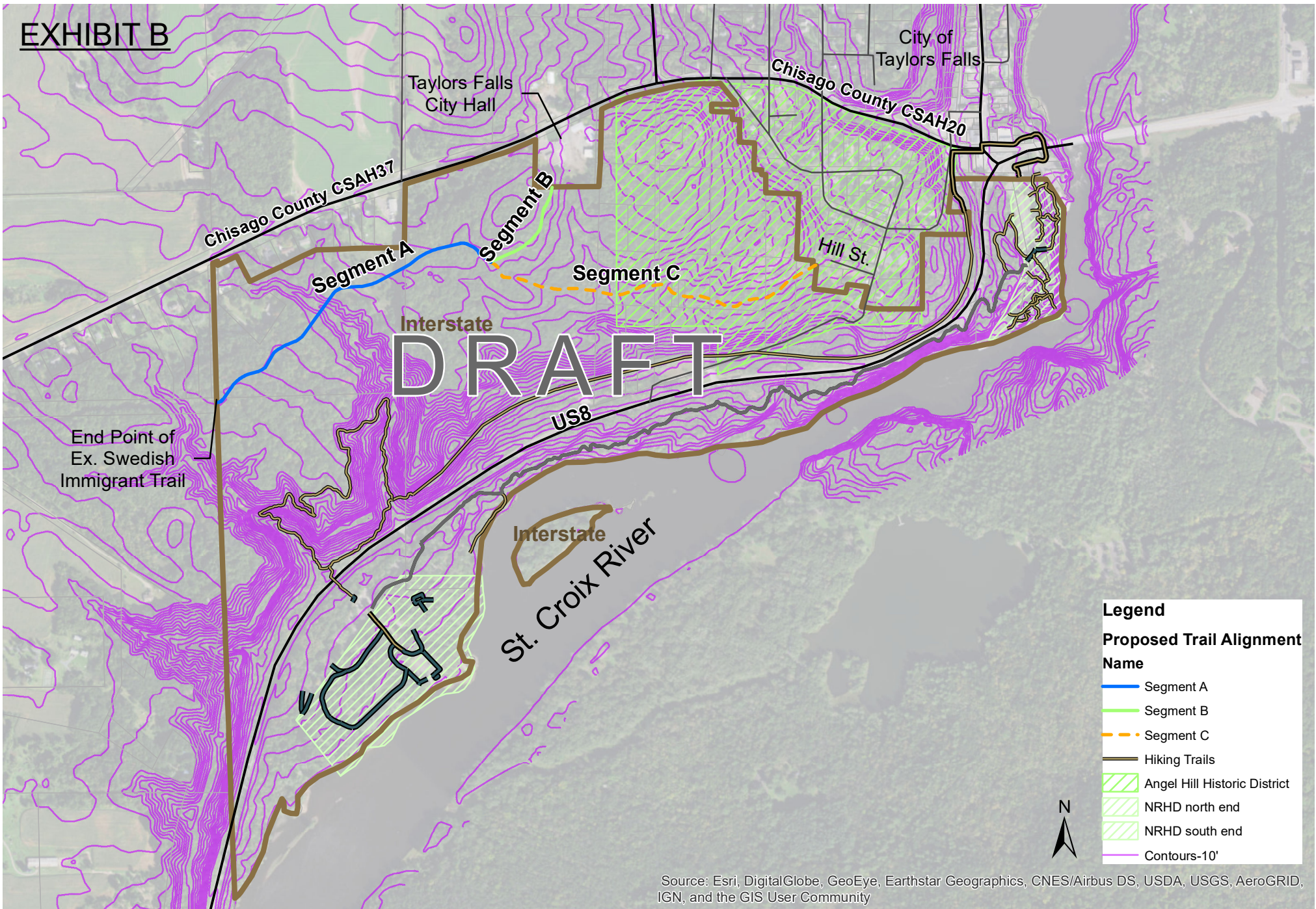
IV. TOTAL ENRTF REQUEST BUDGET 3 years

<u>BUDGET ITEM</u> (See "Guidance on Allowable Expenses", p. 13)	<u>AMOUNT</u>
Personnel:	\$ -
Natural Resource Review 2,600' (A & B within Interstate State Park), contract with MN DNR Staff (position & number of staff TBD)	\$ 7,400
Cultural Resource Review, (for A&B inside State Park) contract with MN DNR Staff, (position and number of staff TBD)	\$ 4,300
Professional/Technical/Service Contracts:	\$ -
Professional/Technical/Service Contract for project design and construction engineering RFP issued. (Consultant to be determined by competitive bid)	\$ 160,000
Professional/Technical/Service Contract for project design and construction engineering contract with MN DNR Engineers for project review.	\$ 78,000
Natural & Cultural Resource Review (area C within State Park), contract with MN DNR Staff (position & number of staff TBD)	\$ 202,350
Additional Budget Items:	\$ -
Bridge Construction: Remanufactured 180' steel truss bridge and related construction.	\$ 950,000
Trail construction, trail head/parking area, sign and project requirements includes debris removal within park. This line items includes the following details; Construction mobilization, clearing & grubbing, excavation, granular borrow, aggregate base, bituminous surfacing 2.5", erosion control, culverts, seeding and mulch, parking area paving, trail head signage and amenities.	\$ 852,615
	\$ 2,254,665

V. OTHER FUNDS (This entire section must be filled out. Do not delete rows. Indicate "N/A" if row is not applicable.)

<u>SOURCE OF FUNDS</u>	<u>AMOUNT</u>	<u>Status</u>
Other Non-State \$ To Be Applied To Project During Project Period: <i>Segment F is also planned for construction in 2018 and 2019. Segment F is a 1.5 mile segment connecting the City of Shafer with Segment G and the City of Taylors Falls. A combination of Legacy Funding and County matching fund.</i>	TBD	<i>Secured</i>
Other State \$ To Be Applied To (Other Segments) During Project Period: <i>Other projects underway on the Swedish Immigrant Regional Trail include Segment F, this is a 1.5 mile segment connecting the City of Shafer with the Taylors Falls. A combination of Legacy Funding and County matching funds will be supporting this connection County Funds</i>	TBD	<i>Secured</i>
In-kind Services To Be Applied To Project During Project Period: <i>County Staff time committed to project management.</i>	TBD	<i>Indicate: Secured or Pending</i>
Past and Current ENRTF Appropriation: <i>Specify dollar amount and year of appropriation from any current ENRTF appropriation for any directly related project of the project manager or organization that remains unspent or not yet legally obligated at the time of proposal submission. Be as specific as possible. Indicate the status of the funds.</i>	none	<i>Indicate: Unspent? Legally Obligated? Other?</i>
Other Funding History: <i>Indicate funding secured but to be expended prior to July 1, 2018, for activities directly relevant to this specific funding request. Legacy Funding and County Funding for Segments E, F, and G. The City of Center City, Lindstrom and Chisago City Segment C.</i>	\$ 2,000,000	

EXHIBIT B



Legend

Proposed Trail Alignment Name

- Segment A
- Segment B
- Segment C
- Hiking Trails
- Angel Hill Historic District
- NRHD north end
- NRHD south end
- Contours-10'



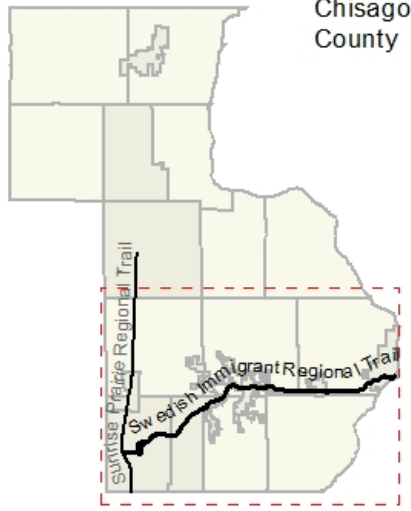
Source: Esri, DigitalGlobe, GeoEye, Earthstar Geographics, CNES/Airbus DS, USDA, USGS, AeroGRID, IGN, and the GIS User Community

State of Minnesota

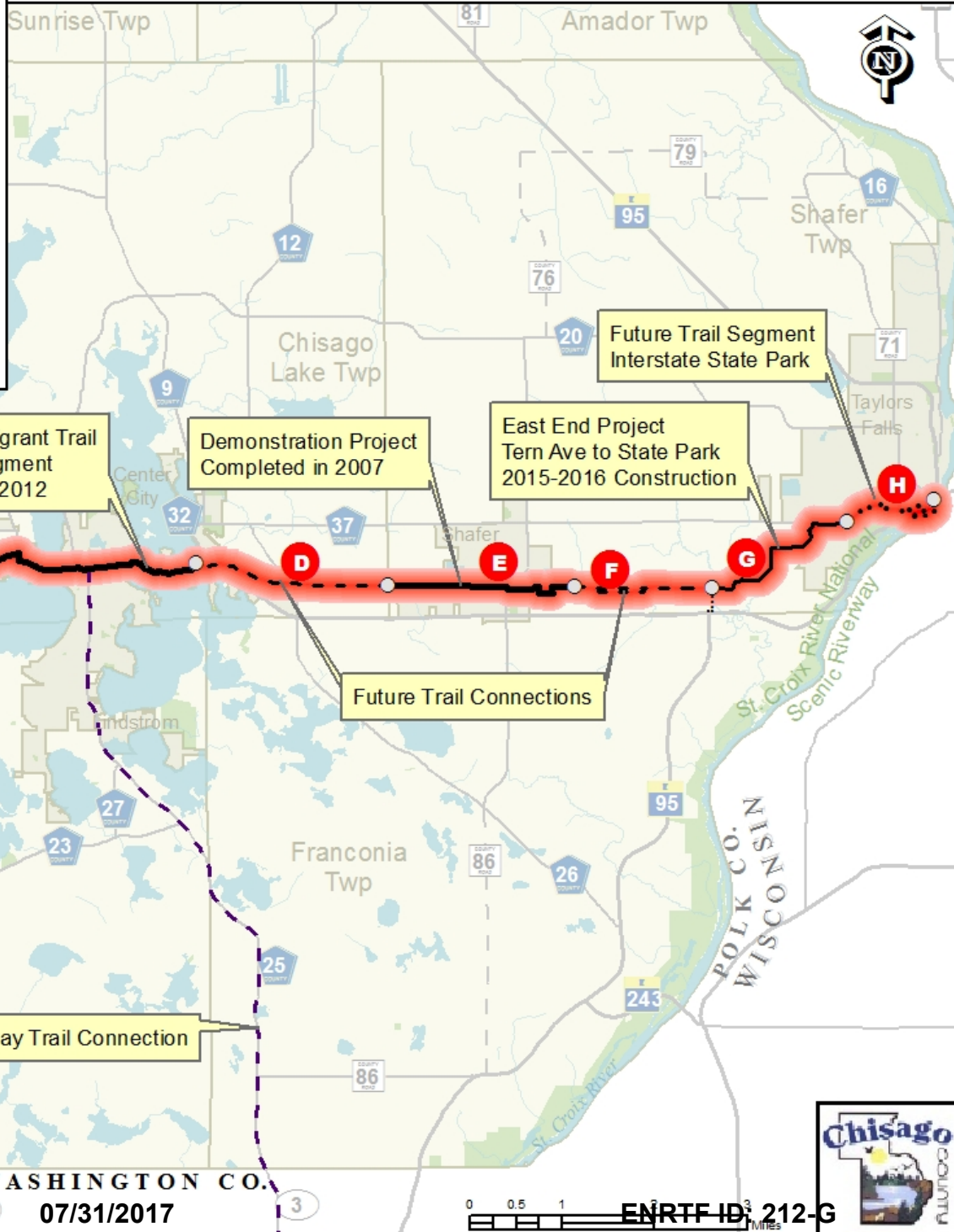


Chisago County

Chisago County



Swedish Immigrant Regional Trail Connections



Sunrise Prairie Trail

Swedish Immigrant Trail Chisago City Segment Completed in 2004

Swedish Immigrant Trail Lindstrom Segment Completed in 2012

Demonstration Project Completed in 2007

East End Project Tern Ave to State Park 2015-2016 Construction

Future Trail Segment Interstate State Park

Future Trail Connection to Sunrise Prairie Trail

Future Trail Connections

Future Gateway Trail Connection

Hardwood Creek Trail





Chisago County
Dept. of Environmental Services, Parks Division
P.O. Box 815
North Branch, MN 55056
(651) 674-2996 - FAX
(651) 674-2345 - PHONE

Chisago County Government is created by the State of Minnesota to serve, to protect, and to enhance the quality of life for those we serve. We perform our duties and obligations in an ethical, democratic, and respectful manner.

The County Administrator also is responsible for the preparation and execution of the county budget, including a long range capital expenditure plan, and serves as the purchasing agent for the county. The County Administrator's Office provides central administration to all County Departments. The Administrator is responsible for the overall management of county operations, and for carrying out all decisions, policies, ordinances and resolutions of the Board of Commissioners.

Chisago County has several staff working on the Swedish Immigrant Regional Trail. The Chisago County Administrator Bruce Messelt, Assistant County Attorney Kristine Fuge, Public Works Director Joe Triplett, Public Works Survey Gary Anderson. Two staff assigned to manage the project directly include, Environmental Services Director Kurt Schneider and Park Director Laird Mork.

Kurt Schneider, Environmental Services Director: Mr. Schneider has been employed as the Director of the Environmental Services Department for Chisago County since 2012, has a B.A. degree from St. Cloud State in Local and Urban Affairs with a minor in Public Administration. He started his career in 1994 spending time in both public and private sector environments. He possesses a strong background in zoning administration, land use, planning, project management and public administration. He operates a diverse Department within the Chisago County organizational structure, which includes divisions of Parks; Solid & Household Hazardous Waste; Lake Improvement District & Water Resources; Wetlands; Zoning Administration & Enforcement; Planning; and Building Code and Septic Inspections & Permitting. He reports to the County Administrator and the County Board of Commissioners, manages an active office, and coordinates the activities of 14 full time equivalent positions coupled with several part-time and seasonal employees.

Laird Mork, Parks Director: Mr. Mork has been employed with Chisago County since 1979, holds a B.S degree from the University of Minnesota in Recreation and Park Management with emphasis in Public Facility Administration. Mork has a proven record of developing strong intergovernmental relationships and cooperative efforts. Mork demonstrates success in administration and budget management. Mork is experience in the creation of sound fiscal programs including capital projects, budgeting, forecasting, development of projects and use of multiple funding sources; e.g. foundations/federal and

state grants. Mork is experienced in facility management including all planning stages through day-to-day operations. Mork is knowledgeable of park and recreation issues, trends, personnel management, creative financing, marketing and public relations. In addition to the development of two new county park facilities, Mork encouraged the acquisition of an abandoned rail corridor and headed the development of the 16 mile Sunrise Prairie Regional Trail in 1997. Mork acquired eight parcels and lead the development of a two mile demonstration project for the Swedish Immigrant Trail in Shafer Minnesota in 2007. Following successful negotiation and acquisition of seven more parcels, Mork completed another two-mile trail segment with three bridges and a trail access/parking area in 2016. Mork is currently working with the Chisago County team to complete the Connection Project in 2018 and with MN DNR to complete the Interstate State Park project in 2019.